

Welcome to Verbandsgemeinde Landstuhl.

On an interesting round tour through our adorable historic city you can experience a time journey on the traces of the legendary Franz von Sickingen, the last chevalier. 23 stations await to be discovered individually and without the pressure of time.

Starting point: Kaiserstraße 37
Length of the tour: approx. 2 km

Hint: Watch out for the chevalier embedded in the pavement, which guides you in the right direction.

Please note: On a short 60m long part of the tour, along the busy main street, the width of the sidewalk is not suitable for wheelchairs and buggies.

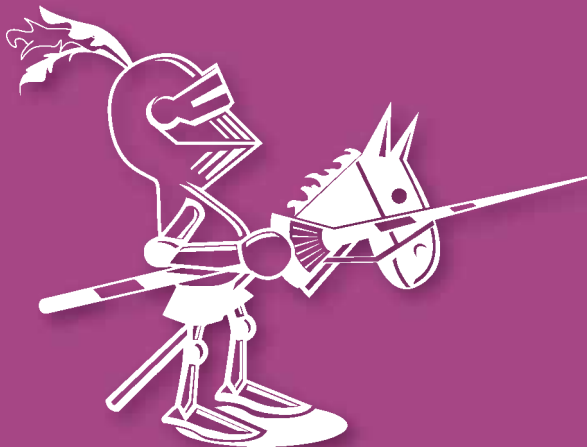
The historic city walk with audio guides: Landstuhl to see, to hear and to marvel at – you can plan your own individual guided city tour, with the city map and your Smartphone or MP3 player.



On the following homepage you have the opportunity to download the text files and the audio files to the single sights or the complete package:

www.landstuhl.de/tourismus/altstadtrundgang.html

We hope you enjoy your historic city walk and we wish you lots of fun.



HISTORIC CITY WALK

Culture and recreation in the community

Castle Nanstein
Burgweg
66849 Landstuhl
Tel.: 0 63 71 / 130 00 12
tourismus@vglandstuhl.de
www.landstuhl.de

Bärenlochweiher (pond) with restaurant Kahnhaus
66862 Kindsbach
Tel.: 0 63 71 / 732 17 69
tourismus@vglandstuhl.de
www.landstuhl.de

Sickingen-Museum in the Tithe Barn
Kirchenstraße 1
66849 Landstuhl
Tel.: 0 63 71 / 130 00 12
tourismus@vglandstuhl.de
www.landstuhl.de

Heidenfels (a Roman spring sanctuary) between Landstuhl & Kindsbach
Tel.: 0 63 71 / 130 00 12
tourismus@vglandstuhl.de
www.landstuhl.de

Mammoth trees
On the street L470 between Landstuhl and Langwieden/Martinshöhe
Tel.: 0 63 71 / 130 00 12
tourismus@vglandstuhl.de
www.landstuhl.de

Natural Gas Educational Trail Oberarnbach/Mittelbrunn
66851 Oberarnbach
Tel.: 0 63 71 / 130 00 12
tourismus@vglandstuhl.de
www.landstuhl.de

Stadthalle Landstuhl Culture and Congress Centre
Kaiserstraße 39
66849 Landstuhl
Tel.: 0 63 71 / 92 34-0
Fax: 0 63 71 / 92 34-40
info@stadthalle-landstuhl.de
www.stadthalle-landstuhl.de

Barbara Chapel ruin of a Romanic chapel from the 18th century
Hauptstraße
66851 Mittelbrunn
Tel.: 0 63 71 / 130 00 12
tourismus@vglandstuhl.de
www.landstuhl.de

CUBO Wellness and Sauna / Natural swimming pool
Kaiserstraße 126
66849 Landstuhl
Tel.: 0 63 71 / 1 30 57 1
Fax: 0 63 71 / 1 30 51 1
www.cubo-landstuhl.de
www.neb-landstuhl.de

Bike and hiking trail „Around the Hausberg“
Starting point: cemetery
66851 Bann
Tel.: 0 63 71 / 130 00 12
tourismus@vglandstuhl.de
www.landstuhl.de



More information

Tourist-Information of Verbandsgemeinde Landstuhl,
Hauptstraße 3 a, 66849 Landstuhl,
Tel.: 0 63 71 / 130 00 12 | Fax: 0 63 71 / 130 03 59
tourismus@vglandstuhl.de | www.landstuhl.de

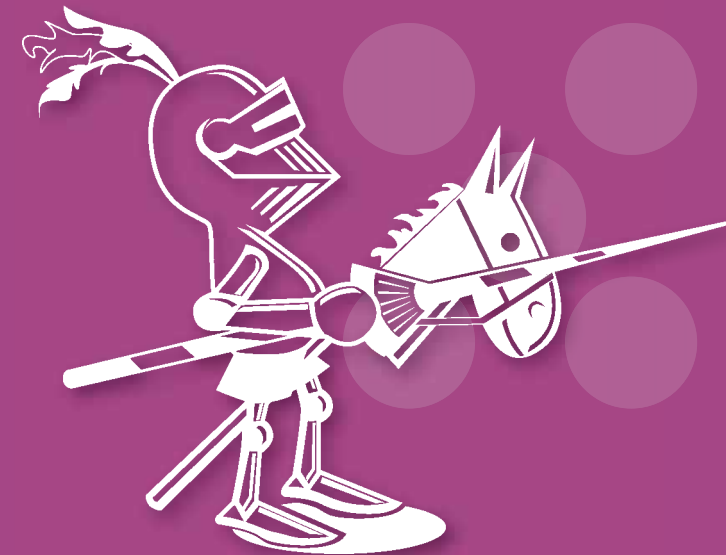
Legal notice:

Publisher: Verbandsgemeinde Landstuhl (association of municipalities Landstuhl) | The statements in this published flyer were put together with highest attention, nevertheless, the Verbandsgemeinde Landstuhl cannot guarantee the correctness and the completeness of the statements. We kindly ask for your understanding.

Photos: Archive of the association of municipalities, Walter Potdevin, Günther Walter, Eckhard Richter | Texts / Translation: Tourist-Information Landstuhl



Sickingenstadt
Landstuhl




“With Franz von Sickingen through the historic city”



Verbandsgemeinde
Landstuhl

Historic City Walk



- 1) **City hall**
Former old Post office, rebuilt to a modern cultural and congress centre
- 2) **Holy-Ghost-Church**
Building style: basilica with a campanile; venerable wooden sculptures beside modern sacral art
- 3) **Old Chapel – official name: Holy Chapel of the Cross**
Choir of the former medieval parish Church St. Andreas; gothic cross vault and gothic mural paintings
- 4) **Protestant City Church**
Building style: Neo-gothic with a spiky tower; red sandstone relief with the crest of the Sickinger over the entrance of the front hall
- 5) **Mansion Benzino**
Building style: North-Italian style of mansions; representative residence of a prosperous Italian merchant family
- 6) **The Roman monument – the three stones**
In vernacular called "Sickingen Würfel"; rests of a Roman monument
- 7) **Lion**
Warrior memorial in memory of the war participants 1870/71 from Landstuhl
- 8) **Main Street**
Half-timbered houses from the 18th century
- 9) **Palace Sickingen**
Former palace of the family Sickingen-Hohenburg from the 18th century. After a fire in the 19th century it was rebuilt without greater changes
- 10) **Palace Street**
Former old suburb with oil mills, flour mills, sawmills and tanneries
- 11) **Spa House**
Once moor bath and hydrophatic establishment for the healing of women's health problems and joint diseases
- 12) **Old Parsonage**
Residence of the catholic pastor from the middle of the 18th century until the end of the 19th century
- 13) **Church Street**
Former medieval Main Street with St. Andreas church and the old Rentei
- 14) **Catholic Church St. Andreas**
1752/53 former location of the Lady Chapel, built on the Mizpah of the town fortification, accommodates the grave of Franz von Sickingen
- 15) **Old Rentei**
Former district offices and mansions of the bailiffs Sickingen-Sickingen, after renovation the civil registry office has been established there, among others
- 16) **Tithe Barn**
The oaken timber is still in its origin and accommodates the Sickingen-Museum
- 17) **District office of Sickingen-Hohenburg**
District office of the Sickingen-Hohenburg bailiffs
-  **Tourist-Information, Hauptstraße 3a**
- 18) **District Court**
Former Royal Bavarian district court with Bavarian national coat of arms at the gable
- 19) **Finance Authority**
Former Royal Bavarian revenue office, also with national coat of arms
- 20) **Emperor Street**
Old Napoleonic military road from Metz to Mainz
- 21) **Townhall**
In former times hotel for the spa guests of the moor bath
- 22) **War memorial at the Kaiserstraße**
In remembrance of the fallen killed in World War I
- 23) **Manor of the Didier family**
Former postal station and tavern and façade elements from the demolished old city palace