

# THE TRAIL

Welcome to the NATURA 2000-trail in the West Palatinate moor, where you'll find yourself surrounded by a cultural landscape with a rich history as well as diverse habitats. From the top of the viewing tower, next to the path, you can enjoy a wonderful outlook over the flora and fauna of the Kranichwoog.

Information boards throughout the path will tell you about points of interest. **Rudi the Crane** will accompany you along the way where you hear him talk about the past and present. Simply scan the QR code on the information boards with your phone – and off you go!

This is a protected area. Please take care to follow the rules below. Thank you!



Keep dogs  
on lead



Stay on the  
path



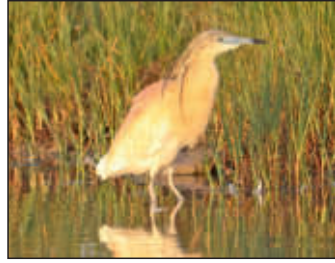
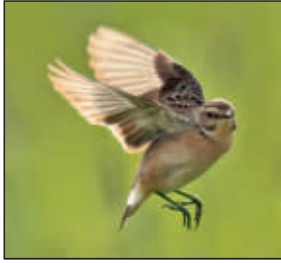
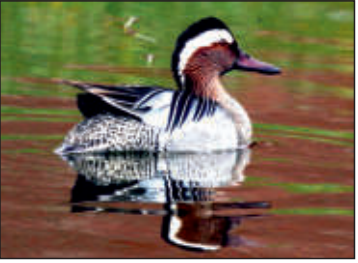
Do not  
disturb  
the animals



Do not  
litter

Help protect our nature – it's worth it!





# THE KRANICHWOOG

The initial idea to create a small “woog” in the Bruch near Hütschenhausen came from the Weilerbach chapter of the NABU (nature conservation group). A cooperation with the Kaiserslautern district administration led to the realization of “Project Kranichwoog”, as it became called.

After a relocation process in the municipality of Hütschenhausen, the West Palatinate Rural Area Service Center was able to provide the area

needed, as well as the design and construction of the ponds.

**Construction began** on September 3, 2018. A year later, two large and three smaller shallow water basins **were completed**, totaling around 6.2 hectares. Overall costs amounted to 606,000 Euros, financed by the EU. To prevent overgrowth of trees and bushes, a grazing belt of 40 hectares was created. In 2022 the first **Carpathian water buffalos** arrived.



# THE TOWER

When it became apparent that the Kranichwoog was going to be a success, the nature conservation authority responsible for the district of Kaiserslautern came up with the idea of a viewing tower to provide a better experience of nature on the Woog.

The winning idea from a design competition was realized by architect Marc Flick. It is notable for its predominant use of wood, sound insulation of the stairs and its height limited to only that required to be able to see the two large water areas from the top platform. The project is administrated by the municipality of Ramstein-Miesenbach

- Year of construction: 2023
  - Total height: 24 m
- Viewing platform: 19.50 m
  - Architect: Marc Flick
- Construction company: Zimmerei Ochs
  - Developer:  
**VG Ramstein-Miesenbach**

75% of the project's funding was provided by **LAG Westrich-Glantal** and 25% by the **Rhineland-Palatinate Ministry of Environment**.

